



CRST4141

尺寸(Dimensions):28X28X25(+16)mm

特点 Features

- 1,体积小,重量轻 Small Size and light weight.
- 2,触点负载大(40A) Contact load capacity up to 40A.
- 3,供汽车配套使用 Suitable for automobile and lamp accessories application.
- 4,具有插入式和印刷线路板式两种安装方式 PC Board mounting and direct insert mounting available.

订货信息 Ordering information

CRST 4141--C-S-DC12V--P---R

1 2 3 4 5 6

- 1,型号 Part number: CRST4141
- 2,触点形式 Contact arrangement:A:1A(40A);B:1B(30A);C:1C(30/40A)
- 3,封装形式:S:试水式;无:防尘式 Enclosure: S:Sealed type; Z:Dust cover
- 4,线圈额定电压 Coil rated voltage(V):DC:6,9,12,24
- 5,引出端 Terminals: P:PCB Type; Nil: Plug in type
- 6,线圈瞬态抑制:R:带电阻;无:标准式 Coil transient suppression: R:with Resistance; Nil: Standard

触点数据 Contact data

触点形式 Contact Arrangement	1A(1H)(SPST NO);1B(SPST NC);1C(1Z)(SPDT)	
触点材料 Contact Material	AgNi, AgSnO ₂ , AgCdO	
触点负载(阻性) Contact Rating(Resistive)	1A(40A/14VDC) 1B(30A/14VDC) 1C(NO:30A/40A/14VDC)	
最大切换功率 Max.Switching Power	560W	
最大切换电压 Max.Switching Voltage	30VDC 最大切换电流 Max.Switching Current:40A	
触点阻性或压降 Contact Resistance or Voltage Drop	≤100mΩ	
寿命 Operation Life	电气 Electrical	10 ⁵
	机械 Mechanical	10 ⁷

线圈参数 Coil Parameter

线圈电压 Coil voltage (VDC)		线圈电阻 Coil Resistance Ω ±10%	吸合电压 VDC(最大) Pick up Voltage VDC(Max) (额定电压的 75%) (75% of rated voltage)	释放电压 VDC Release voltage VDC(Min) (额定电压的 10%) (10% of rated voltage)	线圈功耗 Coil power consumption (W)	动作时间 Operate Time (mS)	释放时间 Release Time (mS)
额定 Rated	最大 Max						
12	15.6	90.0	9.0	1.2	1.6	≤10	≤10
24	31.2	320	18.0	2.4	1.8		

注意:1,使用的线圈电压低于线圈额定电压时将会损害继电器的工作.

2,吸合,释放电压仅供检测用,不是设计的使用指标.

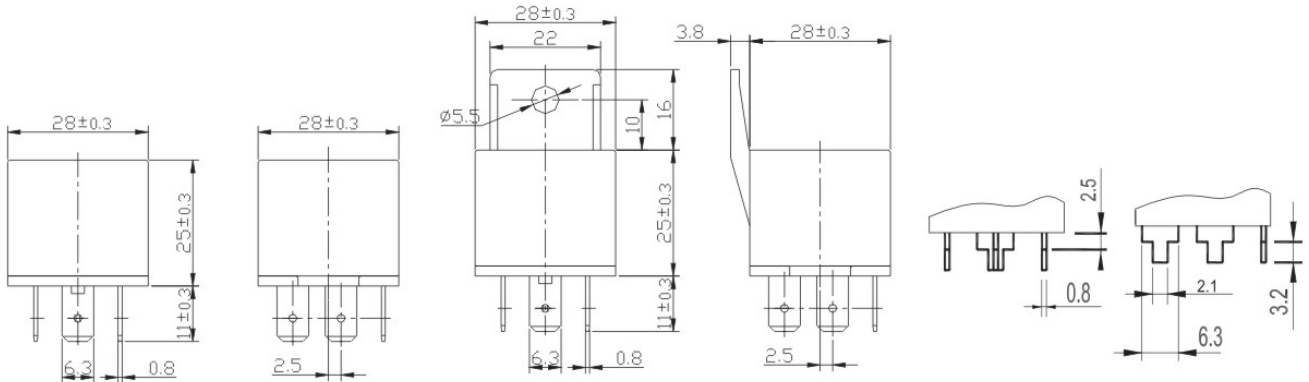
Caution:1,The use of any coil voltage less than the rated coil voltage will compromise the operation of the relay.

2,Pick up and release voltage are for test purposes only and are not be used as design criteria.

技术特性 Operation condition

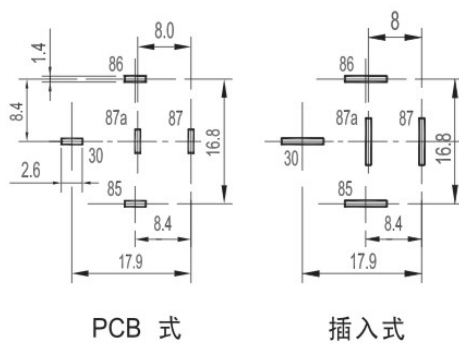
绝缘电阻 Insulation Resistance	最少 100MΩ min(at 500VDC)
介质耐压 Dielectric Strength	
断开触点间 Between Contacts	50Hz 500V
触点与线圈间 Between Contacts and Coil	50Hz 500V
耐冲击 Shock Resistance	147m/s ² 11ms
抗振性 Vibration Resistance	10~55Hz 双振幅 Double amplitude 1.5mm
引出端强度 Terminals Strength	8N 4N(PCB)
可焊性 Solderability	235±2℃ 3±0.5s℃
环境温度 Ambient Temperature	-40~85℃
相当湿度 Relative Humidity	85%(at 40℃)
质(重)量 Mass	31g

外形尺寸 Dimensions(mm/Inch)



注:可采用上图所示的引出端
Note: Terminals as shown above are also available.

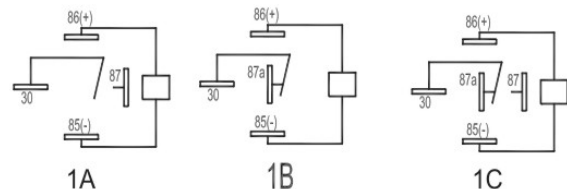
外形尺寸图
Dimensions



PCB 式

插入式

安装尺寸图 (底视图)
Mounting (Bottom view)



接线图 (底视图)
Wiring diagram (Bottom view)

注: 1) 尺寸以毫米为单位。
NOTES Dimensions are in millimeters.

2) 给出的等量英寸值仅供参考。

Inch equivalents are given for general information only